

- NOTES:**
1. THE SURVEY WAS MADE ON THE BASIS OF THE RECORDS OF THE PUBLIC RECORDS OF BRAZOS COUNTY, TEXAS.
 2. THE SURVEY WAS MADE ON THE BASIS OF THE RECORDS OF THE PUBLIC RECORDS OF BRAZOS COUNTY, TEXAS.
 3. THE SURVEY WAS MADE ON THE BASIS OF THE RECORDS OF THE PUBLIC RECORDS OF BRAZOS COUNTY, TEXAS.
 4. THE SURVEY WAS MADE ON THE BASIS OF THE RECORDS OF THE PUBLIC RECORDS OF BRAZOS COUNTY, TEXAS.
 5. THE SURVEY WAS MADE ON THE BASIS OF THE RECORDS OF THE PUBLIC RECORDS OF BRAZOS COUNTY, TEXAS.
 6. THE SURVEY WAS MADE ON THE BASIS OF THE RECORDS OF THE PUBLIC RECORDS OF BRAZOS COUNTY, TEXAS.
 7. THE SURVEY WAS MADE ON THE BASIS OF THE RECORDS OF THE PUBLIC RECORDS OF BRAZOS COUNTY, TEXAS.
 8. THE SURVEY WAS MADE ON THE BASIS OF THE RECORDS OF THE PUBLIC RECORDS OF BRAZOS COUNTY, TEXAS.
 9. THE SURVEY WAS MADE ON THE BASIS OF THE RECORDS OF THE PUBLIC RECORDS OF BRAZOS COUNTY, TEXAS.
 10. THE SURVEY WAS MADE ON THE BASIS OF THE RECORDS OF THE PUBLIC RECORDS OF BRAZOS COUNTY, TEXAS.

STREET NOTES:

1. THE STREETS SHOWN ON THIS MAP ARE THE STREETS OF THE CITY OF BRYAN, TEXAS.
2. THE STREETS SHOWN ON THIS MAP ARE THE STREETS OF THE CITY OF BRYAN, TEXAS.
3. THE STREETS SHOWN ON THIS MAP ARE THE STREETS OF THE CITY OF BRYAN, TEXAS.
4. THE STREETS SHOWN ON THIS MAP ARE THE STREETS OF THE CITY OF BRYAN, TEXAS.
5. THE STREETS SHOWN ON THIS MAP ARE THE STREETS OF THE CITY OF BRYAN, TEXAS.
6. THE STREETS SHOWN ON THIS MAP ARE THE STREETS OF THE CITY OF BRYAN, TEXAS.
7. THE STREETS SHOWN ON THIS MAP ARE THE STREETS OF THE CITY OF BRYAN, TEXAS.
8. THE STREETS SHOWN ON THIS MAP ARE THE STREETS OF THE CITY OF BRYAN, TEXAS.
9. THE STREETS SHOWN ON THIS MAP ARE THE STREETS OF THE CITY OF BRYAN, TEXAS.
10. THE STREETS SHOWN ON THIS MAP ARE THE STREETS OF THE CITY OF BRYAN, TEXAS.

UTILITY NOTES:

1. THE UTILITY LINES SHOWN ON THIS MAP ARE THE UTILITY LINES OF THE CITY OF BRYAN, TEXAS.
2. THE UTILITY LINES SHOWN ON THIS MAP ARE THE UTILITY LINES OF THE CITY OF BRYAN, TEXAS.
3. THE UTILITY LINES SHOWN ON THIS MAP ARE THE UTILITY LINES OF THE CITY OF BRYAN, TEXAS.
4. THE UTILITY LINES SHOWN ON THIS MAP ARE THE UTILITY LINES OF THE CITY OF BRYAN, TEXAS.
5. THE UTILITY LINES SHOWN ON THIS MAP ARE THE UTILITY LINES OF THE CITY OF BRYAN, TEXAS.
6. THE UTILITY LINES SHOWN ON THIS MAP ARE THE UTILITY LINES OF THE CITY OF BRYAN, TEXAS.
7. THE UTILITY LINES SHOWN ON THIS MAP ARE THE UTILITY LINES OF THE CITY OF BRYAN, TEXAS.
8. THE UTILITY LINES SHOWN ON THIS MAP ARE THE UTILITY LINES OF THE CITY OF BRYAN, TEXAS.
9. THE UTILITY LINES SHOWN ON THIS MAP ARE THE UTILITY LINES OF THE CITY OF BRYAN, TEXAS.
10. THE UTILITY LINES SHOWN ON THIS MAP ARE THE UTILITY LINES OF THE CITY OF BRYAN, TEXAS.

GENERAL NOTES:

1. ALL DIMENSIONS ARE IN FEET.
2. ALL DIMENSIONS ARE IN FEET.
3. ALL DIMENSIONS ARE IN FEET.
4. ALL DIMENSIONS ARE IN FEET.
5. ALL DIMENSIONS ARE IN FEET.
6. ALL DIMENSIONS ARE IN FEET.
7. ALL DIMENSIONS ARE IN FEET.
8. ALL DIMENSIONS ARE IN FEET.
9. ALL DIMENSIONS ARE IN FEET.
10. ALL DIMENSIONS ARE IN FEET.

CERTIFICATE OF APPROVED AND APPROVED:

CITY OF BRYAN, TEXAS }
COUNTY OF BRAZOS }

WE, THE UNDERSIGNED, A TEXAS LIMITED LIABILITY CO., REPRESENTED BY _____, CHIEF OF THE LAND DIVISION, DO HEREBY CERTIFY THAT THIS PLAN IS IN COMPLIANCE WITH THE APPLICABLE CODES OF ORDINANCES OF THE CITY OF BRYAN AND HAS BEEN APPROVED BY THE CITY COUNCIL OF THE CITY OF BRYAN, TEXAS, ON THIS _____ DAY OF _____, 2003.

BY _____, CITY CLERK, BRAZOS COUNTY, TEXAS

CITY CLERK, BRAZOS COUNTY, TEXAS

APPROVAL OF THE CITY ENGINEER:

THE UNDERSIGNED CITY ENGINEER OF THE CITY OF BRYAN, TEXAS, DO HEREBY CERTIFY THAT THIS PLAN IS IN COMPLIANCE WITH THE APPLICABLE CODES OF ORDINANCES OF THE CITY OF BRYAN AND HAS BEEN APPROVED BY THE CITY ENGINEER OF THE CITY OF BRYAN, TEXAS, ON THIS _____ DAY OF _____, 2003.

CITY ENGINEER, BRAZOS COUNTY, TEXAS

APPROVAL OF THE COUNTY ENGINEER:

THE UNDERSIGNED COUNTY ENGINEER OF BRAZOS COUNTY, TEXAS, DO HEREBY CERTIFY THAT THIS PLAN IS IN COMPLIANCE WITH THE APPLICABLE CODES OF ORDINANCES OF BRAZOS COUNTY, TEXAS, ON THIS _____ DAY OF _____, 2003.

COUNTY ENGINEER, BRAZOS COUNTY, TEXAS

CERTIFICATE OF THE SUBSCRIBER AND APPROVED:

CITY OF BRYAN, TEXAS }
COUNTY OF BRAZOS }

WE, THE UNDERSIGNED, A TEXAS LIMITED LIABILITY CO., REPRESENTED BY _____, CHIEF OF THE LAND DIVISION, DO HEREBY CERTIFY THAT THIS PLAN IS IN COMPLIANCE WITH THE APPLICABLE CODES OF ORDINANCES OF THE CITY OF BRYAN AND HAS BEEN APPROVED BY THE CITY COUNCIL OF THE CITY OF BRYAN, TEXAS, ON THIS _____ DAY OF _____, 2003.

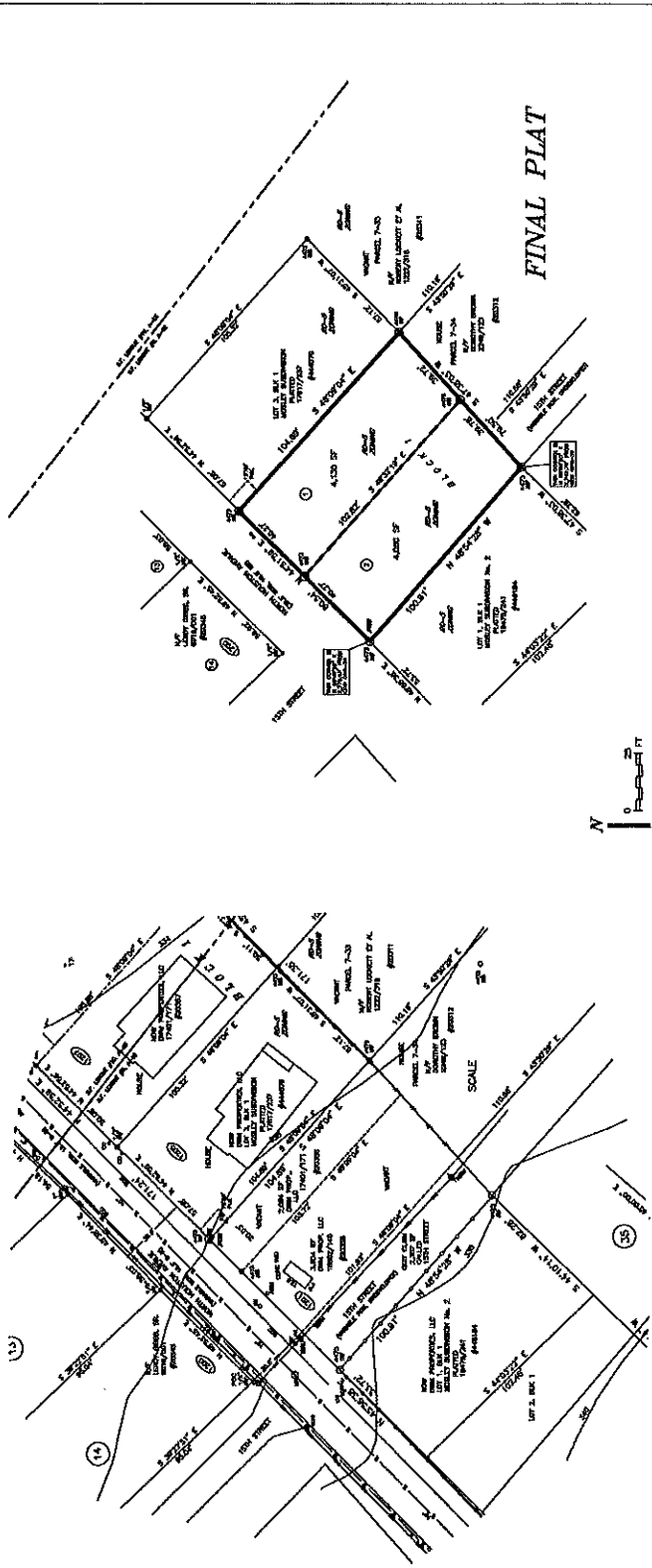
BY _____, CITY CLERK, BRAZOS COUNTY, TEXAS

CERTIFICATE OF THE SUBSCRIBER AND APPROVED:

CITY OF BRYAN, TEXAS }
COUNTY OF BRAZOS }

WE, THE UNDERSIGNED, A TEXAS LIMITED LIABILITY CO., REPRESENTED BY _____, CHIEF OF THE LAND DIVISION, DO HEREBY CERTIFY THAT THIS PLAN IS IN COMPLIANCE WITH THE APPLICABLE CODES OF ORDINANCES OF THE CITY OF BRYAN AND HAS BEEN APPROVED BY THE CITY COUNCIL OF THE CITY OF BRYAN, TEXAS, ON THIS _____ DAY OF _____, 2003.

BY _____, CITY CLERK, BRAZOS COUNTY, TEXAS



PRELIMINARY PLAN

FINAL PLAT

MOSLEY SUBDIVISION No. 3
LOTS 1 AND 2, BLOCK 1

OWNER/DEVELOPER: DANIEL MOSLEY P. O. BOX 1004 BRYAN, TX 77801	DATE: SEPTEMBER 27, 2003 APPROVED BY: OAG REVISIONS:	PROJECT: 6-23 SHEET: 1 of 1
1201 NORTH BRISTOL AVENUE 0.1891 ACRES (8.186 S.F.) S. F. AUSTIN LEAGUE # 10, 4-6S BRAZOS COUNTY, TEXAS		

ALONDO ENGINEERS AND PLANNERS, INC.
3107 ROLLING GLEN BRYAN, TEXAS 77807 979-229-2316
PRM LICENSE: ENGINEERING F-1789, SURVEYING 100269-00